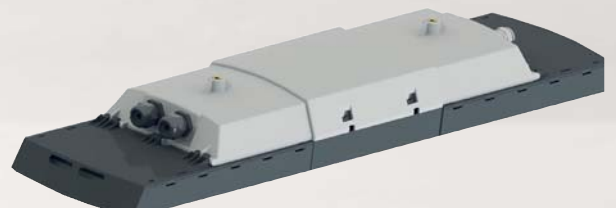
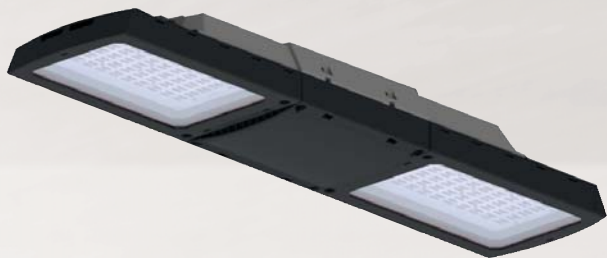


Explosion protected
linear light fixture

CROUSE-HINDS
SERIES

CEAG ExLin

LED linear fixtures for hazardous areas



EATON

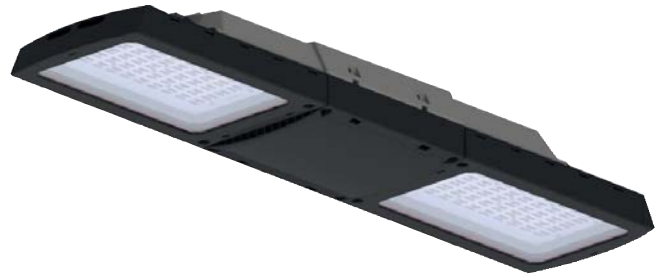
Powering Business Worldwide



Introducing CEAG ExLin

A linear LED engineered for use in Zone 1 and 21 hazardous areas.

CEAG ExLin delivers longer life, improved efficiency and superior performance with a competitive payback vs. fluorescent fixtures.



The following CEAG ExLin models will replace 2x18W, 2x36W and 2x58W fluorescent fixtures

Model	Typical lumens with clear glass lens	Wattage	Lumens per watt	Equivalent fluorescent luminaire	Typical energy savings / lifetime
ExLin 3L-1	2,750	22 W	125	2 x 18 W	> 40%
ExLin 5L-1	5,300	44 W	120	2 x 36 W	> 40%
ExLin 5L-2	5,480	44 W	125	2 x 36 W	> 40%
ExLin 7L-2	8,120	67 W	121	2 x 58 W	> 40%

Applications:

- Designed to provide general illumination where moisture, dust, corrosion, and extreme temperature exist
- Areas requiring frequent on-and-off of lights
- Oil and gas refineries, petrochemical facilities, food and beverage facilities, platforms, loading docks, tunnels, outdoor wall and stanchion mounted general area lighting, and where flammable vapors and gases are present.

Why CEAG ExLin LED?

Safe, reliable, efficient. CEAG ExLin fixtures combine state-of-the-art LED technology with optimised thermal management and a time-tested enclosure to extend service life in extreme environments.



Superior performance and efficiency

- Replaces 2x18W, 2x36W and 2x58W fluorescent fixtures
- Rated life of 100,000 hours at 25°C based on L90C5 provides long term, low-maintenance operation
- Up to 120 LM/W provides up to 40% energy efficiency compared to traditional fluorescent fixtures
- Operating temperature from -40°C to +55°C

Optimised light distribution with optics and lens options

- Standard, narrow and wide beam optics optimise light distribution, providing light where the customer needs it with the potential to reduce the number of fixtures required
- Clear or diffused (frosted) lens available in glass provides application flexibility
- Optional laminated glass lens with extended plastic foil prevents glass from falling - ideal for safe use in critical processes in food and beverage, chemical and pharmaceutical applications

Low profile and lightweight design with drop in mounting compatibility to CEAG eLLK fluorescent

- Decreases footprint in confined applications and reduces installation effort
- Same fixing point as eLLK 2x18W fixtures and a mounting kit available allowing for easy replacement of 2x36W and 2x58W without changing cables

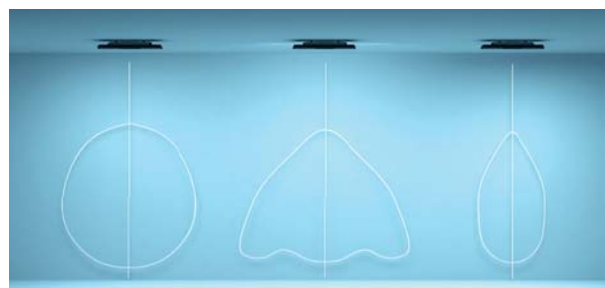
Emergency lighting function with central battery system

Also available with V-CG-S functionality:
Save and reliable lighting by EATON central battery system

- 25%, 50% or 100% light output in emergency lighting mode freely selectable for each single light fitting
- for a long emergency lighting duration due to optimized use of battery capacity

State-of-the-art LED technology coupled with a long history of hazardous area lighting design expertise

- LED light strings operate independently. Should one string fail, all other strings will continue to work, avoiding complete loss of illumination
- Enclosure material is time-tested and field-proven for durability in harsh and hazardous applications globally
- Optimised thermal management for extending service life in extreme environments



Standard

Wide

Narrow



1360 mm

eLLK92, 2x36W

770 mm

ExLin 5L, -43% length

CEAG ExLin technical specifications:

Certifications and compliances:

IECEX / ATEX Standards:

EC-Type Examination Certificate

- BVS 18 ATEX E 037 X

IECEX-Certification of conformity

- IECEX BVS 18.0028X

Marking accd. to 2014/34/EU

- Ex II 2G Ex eb ib op is q IIC T4/T5 Gb
- Ex II 2D Ex tb op is IIIC T80/110°C Db

Marking accd. to IECEX

- Ex eb ib op is q IIC T4 Gb
- Ex tb op is IIIC T80/110°C Db

Permissible ambient temperature, depending on configuration

- -40°C up to +55°C*

Degree of protection accd. to EN 60529

- IP66/67

IK-class according to IEC/EN 62262

- IK10

* up to +50°C for 3L1 and 5L2 with through wiring and plastic cable glands. Up to +45°C for 5L1 and 7L2 with through wiring and plastic cable glands.



3L-1 and 5L-1 models

5I-2 and 7L-2 models

LED system:

- Light colour / CRI: 5000K / 70 (80 on request)
- Optics: Standard, narrow beam, wide beam.

Fixture life (IEC 62722):

LED

- L90 ~100,000 h at ta = +25 °C
- L85 ~75,000 h at ta = +55 °C

Control gear

- C5 ~100,000 h at ta = +25 °C
- C10 ~75,000 h at ta = +55 °C

Standard materials:

- Fixture enclosure - Glassfibre reinforced polyester
- LED module cover - toughened glass or plastic-laminated glass, clear or opaque

Dimensions and weights:

ExLin 3L-1 and 5L-1

- 770x201x115 mm

- 6.7 kg

ExLin 5L-2 and 7L-2

- 931x201x115 mm

- 8.0 kg

Electrical ratings:

Model	ExLin 3L-1	ExLin 5L-1	ExLin 7L-2
Voltage*	110 up to 277 V AC/DC	110 up to 277 V AC/DC	110 up to 277 V AC/DC
Power consumption	22W	44W	67W
Lumens (clear glass cover) †	2750	5300	8120
Lumens (frosted glass cover) †	2370	4580	6920
Frequency	0/50 - 60 Hz	0/50 - 60 Hz	0/50 - 60 Hz
Inrush current	5A for 1ms	5A for 1ms	9A for 1ms
Power factor cos φ @ 230 V	≥ 0.92	≥ 0.95	≥ 0.95
Circuit	EVG	EVG	EVG
Protection class	I	I	I
Immunity to surge voltages according to EN6100-4-5	4 kV, L-N and L-PE	4 kV, L-N and L-PE	4 kV, L-N and L-PE
THD @230V	8%	5%	5%

* V-CG-S types

Voltage:
220-254 V AC / 195-250 V DC

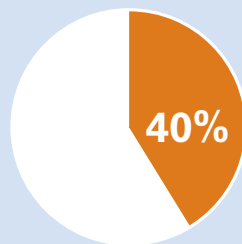
† Lumen values apply to 5000K light colour, 70 CRI fixtures. Lumen output may vary slightly for different models.

LED vs. fluorescent savings at a glance

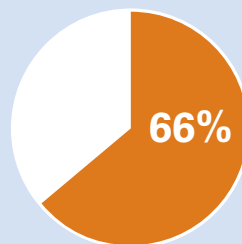
Why are so many facilities making the switch from fluorescent to LED?

The numbers say it all.

CEAG ExLin vs. x 36W Fluorescent



40% REDUCTION IN ENERGY COSTS



66% LOWER TOTAL COST OF OWNERSHIP



100% LAMP MAINTENANCE REDUCTION

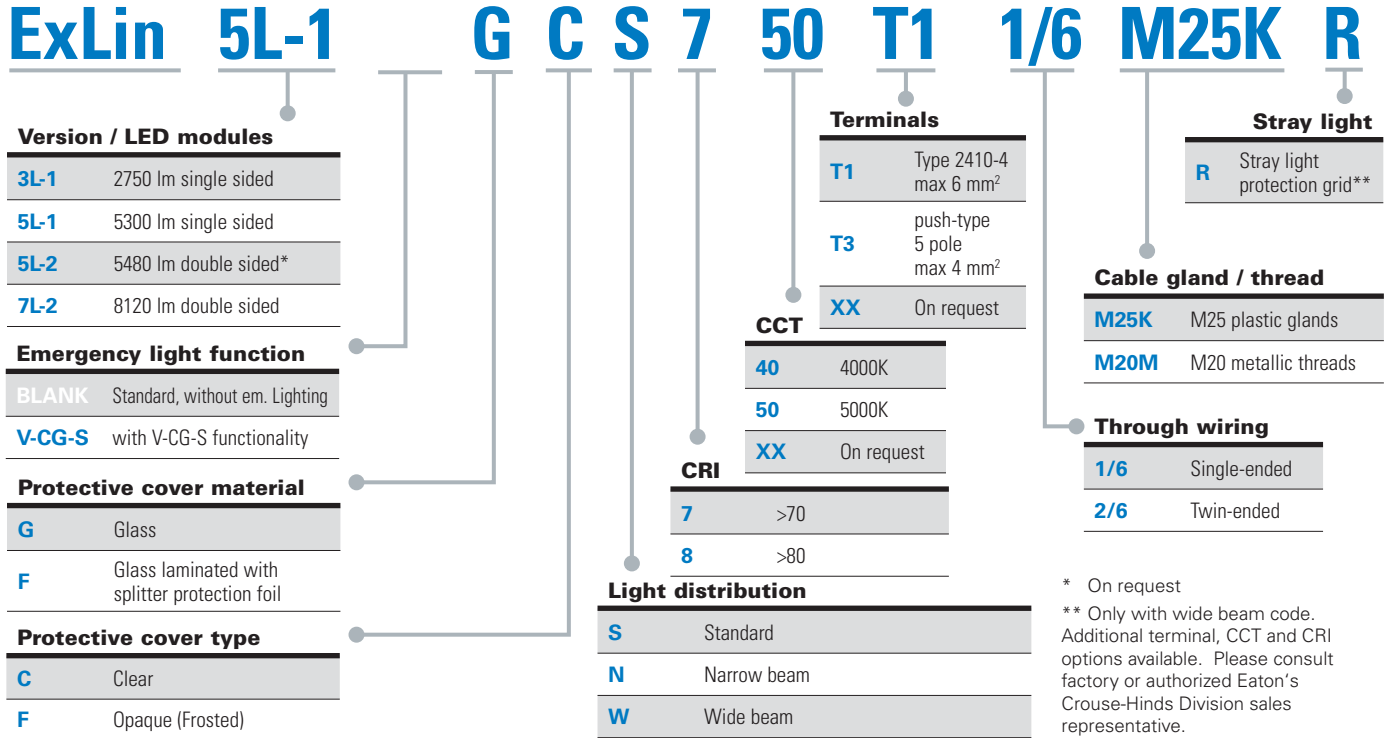
Assumptions: Calculations based on overall life of the LED system. Energy cost of €0.09 per kilowatt; 24 hour per day operation; labor rate of €75 each for 2 workers; average time for fixture maintenance of 2 hours.

Catalog Numbering System:

Part number example

ExLin 5L-1 G C S 7 50 T1 1/6 M25K

CEAG ExLin linear, 5300 lumens, glass lens, clear lens, standard light beam, >70 CRI, 5000K, Type 2410-4 terminals, single-ended wiring, M25 plastic cable gland



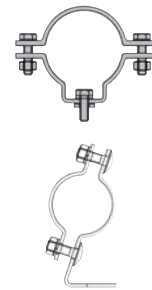
* On request
 ** Only with wide beam code. Additional terminal, CCT and CRI options available. Please consult factory or authorized Eaton's Crouse-Hinds Division sales representative.

Example:	Order-No.:	Example Order-No.:	Example:
ExLin	Key	12300 1 4 0 101	ExLin description
ExLin 3L-1	xxxxx x 2 x xxx		
ExLin 5L-1	xxxxx x 4 x xxx	xxxxx x 4 x xxx	5300lm single sided
ExLin 5L-2	xxxxx x 5 x xxx		
ExLin 7L-2	xxxxx x 7 x xxx		
ExLin G	12300 x x x xxx	12300 x x x xxx	Standard, glass cover
ExLin F	12301 x x x xxx		
ExLin V-CG-S G	12310 x x x xxx		
ExLin V-CG-S F	12311 x x x xxx		
ExLin C S	xxxxx x x 0 xxx	xxxxx x x 0 xxx	Clear cover, standard light beam
ExLin C N	xxxxx x x 1 xxx		
ExLin C W	xxxxx x x 2 xxx		
ExLin C W ... R	xxxxx x x 4 xxx		
ExLin F S	xxxxx x x 5 xxx		
ExLin F N	xxxxx x x 6 xxx		
ExLin F W	xxxxx x x 7 xxx		
ExLin 750	xxxxx 1 x x xxx	xxxxx 1 x x xxx	CRI >70, CCT 5000K
ExLin 740	xxxxx 2 x x xxx		
ExLin 850	xxxxx 3 x x xxx		
ExLin 840	xxxxx 4 x x xxx		
ExLin 1/6 M25K	xxxxx x x x 101	xxxxx x x x 101	single ended wiring with M25 plastic glands
ExLin 2/6 M25K	xxxxx x x x 103		
ExLin 1/6 M20M	xxxxx x x x 109		
ExLin 2/6 M20M	xxxxx x x x 111		
ExLin 1/6 M25M	xxxxx x x x 609		
ExLin 2/6 M25M	xxxxx x x x 611		

Mounting Accessories (Order Separately)

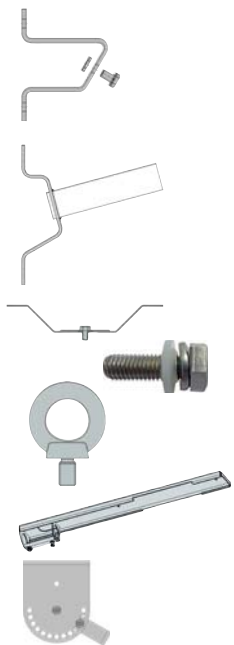
Pipe Clamps

Ordering Code	Description
2 2480 462 000 *	2 pcs. R12 (1 1/4"), Ø 38 - 42 mm with screws and polyamide washer, hot-dip galvanized
2 2480 472 000 *	2 pcs. R22 (1 1/2"), Ø 47 - 51 mm with screws and polyamide washer, hot-dip galvanized
2 2480 482 000 *	2 pcs. R32 (2"), Ø 56 - 60 mm with screws and polyamide washer, hot-dip galvanized
NOR 000 005 009 211	1 pcs. A8 (1 1/2") D 47 - 51 mm for AB 12.. with screws and polyamide washer, hot-dip galvanized
NOR 000 005 009 229	1 pcs. A9 (2") D 56 - 60 mm for AB 12.. with screws and polyamide washer, hot-dip galvanized
2 2480 550 010	2 pcs. Two-part, for pipe mounting LB 48 - FT with screws and polyamide washer, hot-dip galvanized



Fixing Accessories

Ordering Code	Description
2 2480 550 013	2 pcs. luminaire mounting bracket with 30° angle, wall mounting LH 30 - FT, hot-dip galvanized
2 2480 550 014	2 pcs. luminaire mounting bracket with 45° angle, wall mounting LH 45 - FT, hot-dip galvanized
2 2480 000 122	2 pcs. wall mounting bracket with 30° angle, with screws and polyamide washer, hot-dip galvanized
NOR 000 005 009 196	1 pcs. wall bracket 45° with screws and polyamide washer, hot-dip galvanized
2 2483 027 000	1 pcs. wall bracket W 27, 15°, for pole-mounting fitting Ø 42 mm, hot-dip galvanized
2 2480 092 000	2 pcs. ceiling mounting bracket D 92 with screws and polyamide washer, stainless steel
NOR 000 005 009 162	1 pcs. ceiling mounting bracket A5 with screws and polyamide washer, hot-dip galvanized
2 2480 550 011	2 pcs. C-bracket for luminaire mounting LAB-C50 - ER, stainless steel
2 2480 054 000	2 pcs. hexagon screw M8 x 20 for luminaire mounting, with polyamide washer
2 2480 002 000 *	2 pcs. eye bolt M8 for luminaire mounting, hot-dip galvanized
NOR 000 005 009 261	1 pcs. eye bolt M8 - A1 for luminaire mounting, hot-dip galvanized
22480600001	Pole mounting adapter - 42-49 mm diameter, stainless steel
22480600002	Pole mounting adapter - 52-62 mm diameter, stainless steel
2 2480 550 022 *	2 pcs. wall mounting bracket with adjustable angle (15° step)



* Also available in stainless steel. Consult factory for ordering code.

Metallic Cable Glands (Order Separately)

ADE-1F2

Catalog #	Metric Thread Size	Cable Types	Cable sealing range - Min	Cable sealing range - Max
ADE1M200NPN	M20	Non-armoured, Marine shipboard, Type P, Tray cable (armoured)	2.8	5.5
ADE1M201NPN	M20		4.5	8.5
ADE1M202NPN	M20		7.0	12.0
ADE1M203NPN	M20		10.0	16.0



ADE-4F

Catalog #	Metric Thread Size	Cable Types	Cable sealing range inner sheath		Cable sealing range outer sheath		Armor	
			Min.	Max.	Min.	Max.	Min.	Max.
ADE4M200NPN	M20	SWA, SWB, STA, Braided marine shipboard, Type P; Lead sheathed cable (with addition of earthing washer)	2.8	5.5	4.5	8.5	0.2	0.9
ADE4M201NPN	M20		4.5	8.0	7.0	12.0	0.2	0.9
ADE4M202NPN	M20		7.0	12.0	10.0	16.0	0.2	1.3
ADE4M203NPN	M20		10.0	15.5	13.5	21.0	0.2	1.3



ADE-1F2 and ADE-4F catalog numbers are for nickel-plated brass; For other material options, refer to our cable glands section within www.crouse-hinds.de/en/

Adapter Kits for eLLK Retrofits (Order Separately)

CEAG ExLin LED fixtures are designed with the same fixing point as Crouse-Hinds series CEAG eLLK 2x18W fixtures, making retrofits simple and cost-effective.

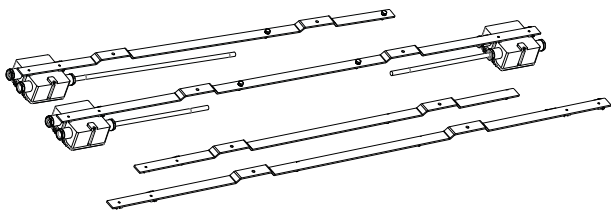
Adapter kits allow for easy replacement of 2x36W and 2x58W eLLK fixtures without changing already-installed cables or mounting brackets. Adapter kits include a metal bar, junction box and connection cables between the junction box and ExLin fixture.

Ordering Code	Description
2 2300 500 001	2 pcs. ExLin adapter kit for retrofitting to eLLK 2x36W fixture - includes metal bar, junction box, plastic glands and connection cable between box and fixture
2 2300 500 002	1 pcs. ExLin adapter kit for retrofitting to eLLK 2x58W fixture - includes metal bar, two junction boxes, plastic glands and connection cable between boxes and fixture
3 2300 500 001	1 pcs. ExLin mounting metal bar for retrofitting to eLLK 2x36W fixture - without junction box and connection cable
3 2300 500 002	1 pcs. ExLin mounting metal bar for retrofitting to eLLK 2x58W fixture - without junction box and connection cable - without junction box and connection cable

See for yourself how easy it is to upgrade your eLLK lighting installation to our state-of-the-art ExLin LED solution!

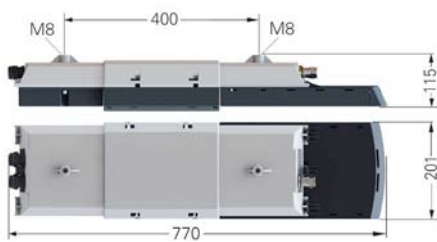


Visit eaton.com/ellk-to-exlin to watch the fast and simple retrofit process using our adapter kit



Dimensions and Weights:

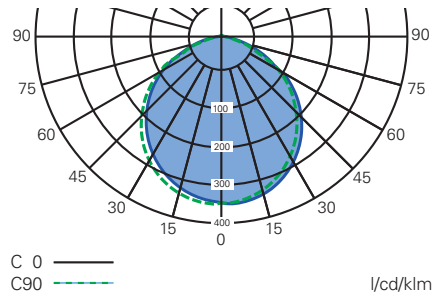
CEAG ExLin 3L-1 and 5L-1:



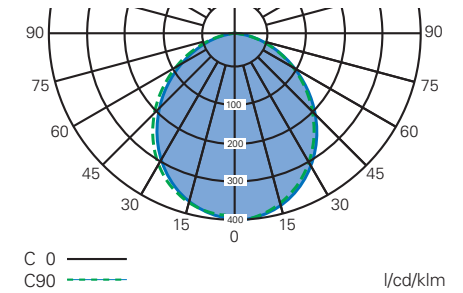
Weight: 6.7 kg

Polar Curves:

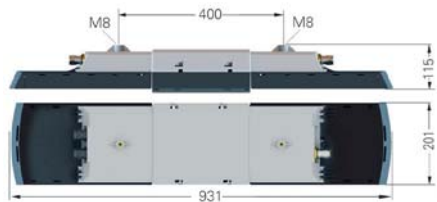
CEAG ExLin standard beam with clear cover



CEAG ExLin standard beam with frosted cover

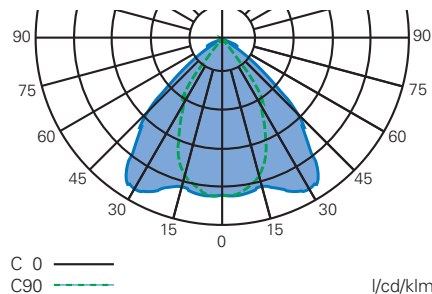


CEAG ExLin 5L-2 and 7L-2:

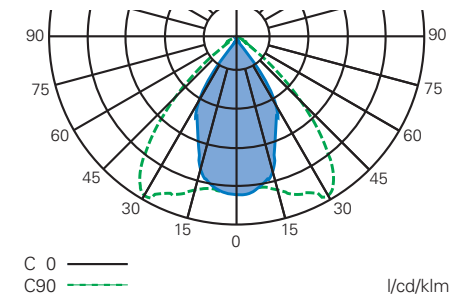


Weight: 8.0 kg

CEAG ExLin wide beam



CEAG ExLin narrow beam



Eaton's Crouse-Hinds Division

The safety you rely on.

See the complete offering of hazardous and industrial products at www.crouse-hinds.de.

**U.S. (Global Headquarters):
Eaton's Crouse-Hinds
Business**

1201 Wolf Street
Syracuse, NY 13208

(866) 764-5454
FAX: (315) 477-5179
FAX Orders Only:
(866) 653-0640

CrouseCustomerCTR@Eaton.com

For more information:

If further assistance is required, please contact an authorized Eaton Distributor, Sales Office, or Customer Service Department.

Australia

Phone +61-2-8787-2777
Fax +61-2-9609-2342
crousehindsanz@eaton.com

China

Phone +86-21-2899-3600
Fax +86-21-2899-4055
ECHsales@eaton.com

Great Britain

Phone +44-247-630-89 30
Fax +44-247-630-10 27
sales5@eaton.com

India

Phone +91-124-4683888
Fax +91-124-4683899
cchindia@eaton.com

Canada

Toll Free +1-800-265-0502
Fax +1-800-263-9504
Fax orders only:
+1-866-653-0645

Korea

Phone +82-2-3484-6783
Fax +82-2-3484-6778
CCHK-sales@cooperindustries.com

**Mexico/Latin America/
Caribbean**

Phone +52-555-804-4000
Fax +52-555-804-4020
mxmercadotecnia@cooperindustries.com

Spain

Phone +34-9-37362710
Fax +34-9-37835055
sales.CCH.es@cooperindustries.com

Middle East (Dubai)

Phone +971-4-427-2522 / 2500
Fax +971-4-429-8521
CHMEsales@Eaton.com

The Netherlands

Phone +31-10-2452145
Fax +31-10-2452121
CHRD_mail@Eaton.com

Norway

Phone +47-32-244600
Fax +47-32-244646
CHLloffice@eaton.com

Singapore:

Phone +65-6645-9888
Fax +65-6297-4819
CHSI-Sales@Eaton.com

Turkey

Phone +90-216-464-20-20
Fax +90-216-464-20-10
infoEGTurkey@eaton.com

Russia

Phone +7-495 510-24-27
Fax +7-495 510-24-28
info@cooper.ru.com
www.cooper-russia.ru

Eaton's Crouse-Hinds Division

Neuer Weg – Nord 49
D-69412 Eberbach

Phone +49 (0) 6271/806-500
Fax +49 (0) 6271/806-476
E-mail info-ex@eaton.com
Internet www.crouse-hinds.de

Eaton
1000 Eaton Boulevard
Cleveland, OH 44122
United States
Eaton.com

© 2020 Eaton Corporation
All Rights Reserved
Printed in Germany
Publication No. BR 300 8000 2297
March 2020

Changes to the products, to the information contained in this document, and to prices are reserved; so are errors and omissions. Only order confirmations and technical documentation by Eaton is binding. Photos and pictures also do not warrant a specific layout or functionality. Their use in whatever form is subject to prior approval by Eaton. The same applies to Trademarks (especially Eaton, Moeller, and Cutler-Hammer). The Terms and Conditions of Eaton apply, as referenced on Eaton Internet pages and Eaton order confirmations.

Eaton's Crouse-Hinds Division
1201 Wolf Street
Syracuse, NY 13208
(866) 764-5454
CrouseCustomerCTR@Eaton.com

Eaton is a registered trademark.
All other trademarks are property of their respective owners.

