

Heating Room Thermostat

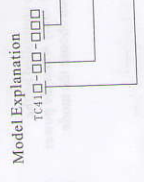
Series of TC41

Installation Manual



TC41-110520(EN)

A. Product Summary
TC41 series of thermostats are electronic heating room thermostats. TC41E and TC41E-2P thermostat is used to control the temperature of electrical heating system. TC41W thermostat is used to control the valve of water-circulation heating system. Can be installed directly on the wall with standard EU installing box.



Rated working voltage, for example, 110 means AC 110V; 220 means AC 220V.
Output current; for example, 03 means 3A, 16 means 16A.
E: Electrical heating
W: Water-circulation heating

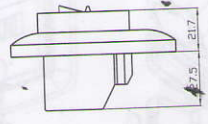
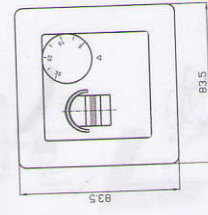
Example: TC41E-16-220
Output current is 16A
Rated working voltage is 220VAC

Note:
TC41E has additional accessory: external sensor
Type Name: TS7205

B. Main Technical Parameter
Output Format: Relay contact.
Temperature Controlling Range: +5°C ~ +35°C.
Limit Temperature: +40°C (Can be set in factory).
Rated Current Load: TC41E < 16A (resistive load); TC41W < 3A (resistive load).
Working Voltage: AC 220(110)V ± 10% 50/60Hz.
External Material: PC engineering plastic, fire-resistant, milk white.

C. Main Functions and Characteristics
1. With working indicator light and out-connected timer port.
2. The temperature is set through the mechanical dial switch on the panel.
3. Going into the safe mode when the sensor cannot work.

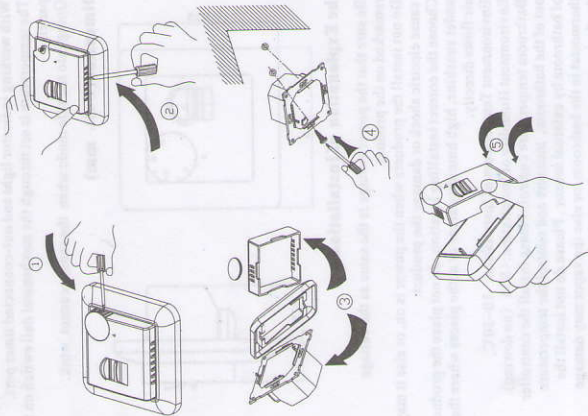
D. Dimension (Unit: mm)



E. The Explanation of Installation

1. Be sure that the power voltage is the same as the voltage remarked on the product.
2. Do not install the products when the power is on, or else it may cause electric shock or damage the product.
3. Choose the correct installing location, do not place the product under sunshine, high humidity areas or at the places where the air flows directly.
4. Environment Temperature of Installation: -10~50°C, Environment Humidity of Installation: <85% (no dewing).
5. Bathroom temperature control: Please install the controller out of the bathroom, measure and control the temperature of bathroom by external sensor. Please do not install the thermostat in the bathroom, or else the vapor may damage the thermostat, and cause electric leakage.

F. Installation sketch map



-3-

G. Operation Explanation

- Under the normal working mode, when the indicator is lighted, the connected device is under working mode, when the indicator goes out, the connected device is out of working.
- When going into the safe mode, the indicator will light or go out intermittently.

H. Choose the Sensor

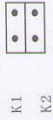
The three working modes of the thermostat are controlled by the terminal points K1 and K2 on the circuit board. Only when the power is off and thermostat does not work, then you can choose the mode.

- Using the external sensor



Only connect the K2, using the external sensor as the main sensor. If the external sensor does not work, the thermostat will connect the internal sensor automatically. If both of the two sensors do not work, the thermostat will go into the safe mode automatically.

- Using the internal sensor



Connect both of the two points K1 and K2, only use the internal sensor. When the internal sensor cannot work, the thermostat will go into the safe mode automatically.

-4-

J. Product Model Option

Model	Working Indicator Light	External Temperature Sensor	Load Current	Wire Diameter
TC41E	✓	✓	≤16A (Resistive Load)	2.5mm ² (14AWG)
TC41W	✓		≤3A (Resistive Load)	0.75mm ² (18AWG)
TC41E-2P	✓	✓	≤16A (Resistive Load)	2.5mm ² (14AWG)

Dear users:

Thanks very much for using our products. Please carefully refer to the explanation before using products. While providing high quality and reliable products, we will provide consummately technical support and after service at any time in any place. If you have any question, please contact with us in time. Thanks again.

Warning:



The symbol means the unit is being installed, it may cause electrical shock hazard during maintaining, so please make sure it is operated by the professional technical worker.

-6-